


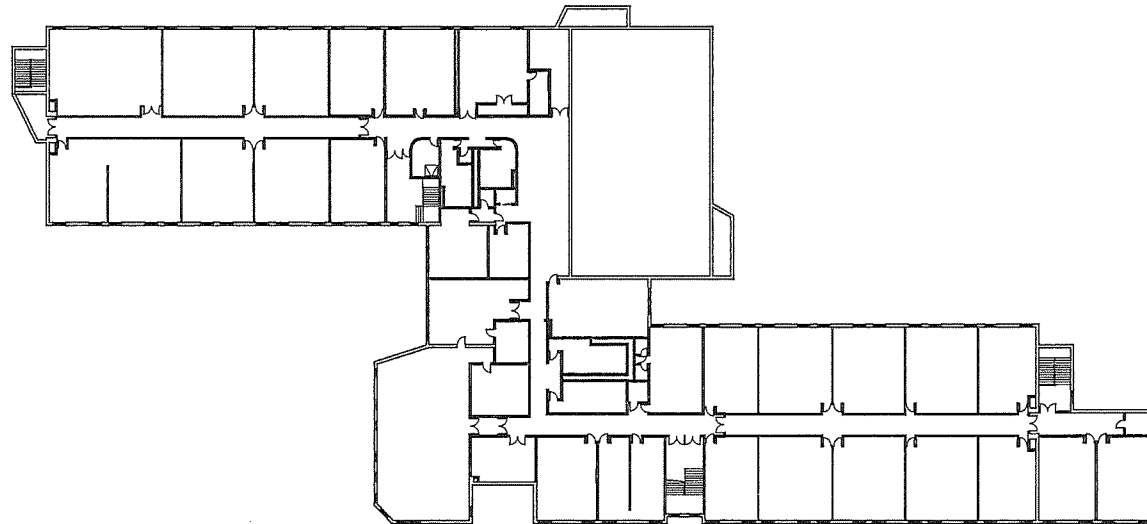


**DRAWING NOTES:**

▨ AREA IN SCOPE  NORTH

**PRELIMINARY**

1ST FLOOR PLAN  
DOORS: 4 DOUBLE



2ND FLOOR PLAN  
DOORS: 1 SINGLE, 5 DOUBLE

PARETTE  
SOMJEN



ARCHITECTS  
A LIMITED LIABILITY CORPORATION  
CERT. NO. 214 (001990)

439 Route 46 East  
Rockaway, NJ 07866  
Tel. 973.586.2400  
Fax. 973.586.2401  
www.planetPSA.com

PROPOSED IMPROVEMENTS  
FOR THE HOPATCONG  
BOARD OF EDUCATION  
HOPATCONG  
MIDDLE SCHOOL

1 DAVID ROAD  
STANHOPE, NJ 07874

FIRE DOOR AND  
HARDWARE  
REPLACEMENT

SCALE: N.T.S

JT  
PROJECT MANAGER  
JD, DR  
DRAWN BY  
9312  
PROJECT NUMBER

SHEET NUMBER

**SK2.12**

13-JANUARY-2023  
RELEASE DATE © COPYRIGHT 2023 PARETTE SOMJEN ARCHITECTS L.L.C.