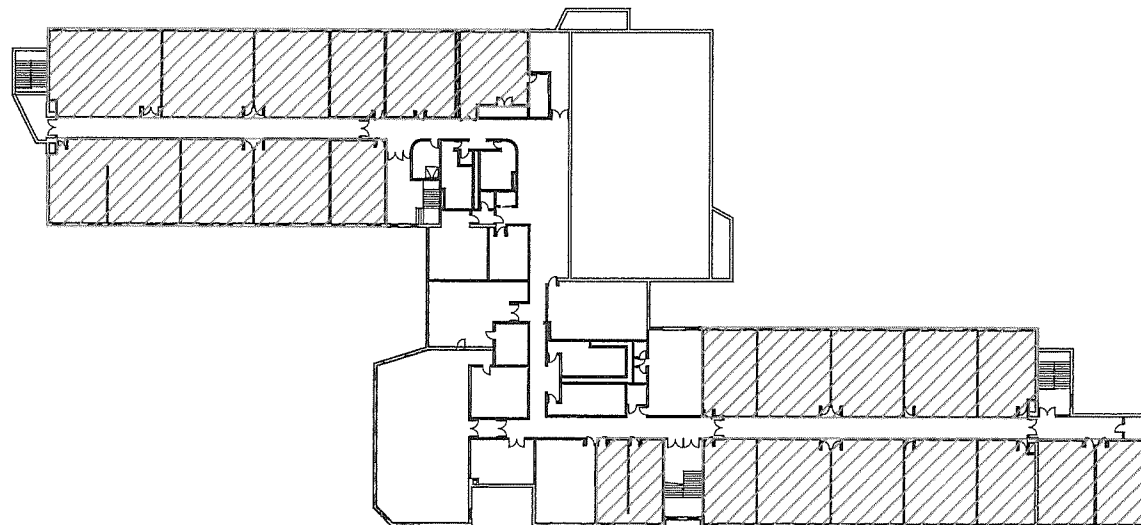


DRAWING NOTES:

AREA IN SCOPE NORTH

PRELIMINARY

1ST FLOOR PLAN
AREA 19,944 SF



2ND FLOOR PLAN
AREA 22,441 SF

PARETTE
SOMJEN



ARCHITECTS
A LIMITED LIABILITY CORPORATION
CERT. NO. 21A100039900

439 Route 46 East
Rockaway, NJ 07866
Tel. 973.586.2400
Fax. 973.586.2401
www.planetPSA.com

PROPOSED IMPROVEMENTS
FOR THE HOPATCONG
BOARD OF EDUCATION
HOPATCONG
MIDDLE SCHOOL

1 DAVID ROAD
STANHOPE, NJ 07874

UNIT VENTILATOR
REPLACEMENT

SCALE: N.T.S

JT
PROJECT MANAGER
JD, DR
DRAWN BY
9312
PROJECT NUMBER

SHEET NUMBER

SK2.16

13-JANUARY-2023
RELEASE DATE © COPYRIGHT 2023 PARETTE SOMJEN ARCHITECTS L.L.C.